



**REGIONAL SPECIALISED METEOROLOGICAL CENTRE-TROPICAL CYCLONES, NEW DELHI
TROPICAL WEATHER OUTLOOK**

DEMS-RSMC SPECIAL TROPICAL CYCLONES NEW DELHI DATED 08.08.2022

TROPICAL WEATHER OUTLOOK FOR NORTH INDIAN OCEAN (THE BAY OF BENGAL AND ARABIAN SEA) VALID FOR NEXT 120 HOURS ISSUED AT 0600 UTC OF 08.08.2022 BASED ON 0300 UTC OF 08.08.2022.

BAY OF BENGAL:

YESTERDAYS, WELL MARKED LOW PRESSURE AREA OVER NORTHWEST BAY OF BENGAL & ADJOINING WESTCENTRAL BAY OF BENGAL OFF SOUTH ODISHA & ADJOINING NORTH ANDHRA PRADESH COASTS LAY OVER NORTHWEST BAY OF BENGAL & ADJOINING AREAS OF COASTAL ODISHA & NORTH COASTAL ANDHRA PRADESH AND WESTCENTRAL BAY OF BENGAL AT 0300 UTC OF TODAY, THE 8TH AUGUST, 2022.

IT IS LIKELY TO INTENSIFY INTO A DEPRESSION OVER THE SAME REGION DURING NEXT 24 HOURS AND MOVE WEST-NORTHWESTWARDS ACROSS ODISHA AND CHHATTISGARH.

AS PER INSAT-3D IMAGERY AT 0300 UTC, SCATTERED TO BROKEN LOW AND MEDIUM CLOUDS WITH EMBEDDED INTENSE TO VERY INTENSE CONVECTION LAY OVER SOUTH COASTAL ODISHA & ADJOINING NORTH COASTAL ANDHRA PRADESH & NEIGHBOURHOOD IN ASSOCIATION WITH THE WELL MARKED LOW PRESSURE AREA. MINIMUM CLOUD TOP TEMPERATURE IS MINUS 93 DEGREE CELSIUS.

SCATTERED TO BROKEN LOW AND MEDIUM CLOUDS WITH EMBEDDED INTENSE TO VERY INTENSE CONVECTION LAY OVER NORTH & CENTRAL BAY OF BENGAL AND ANDAMAN SEA. SCATTERED TO BROKEN LOW AND MEDIUM CLOUDS WITH EMBEDDED MODERATE TO INTENSE CONVECTION OVER REST AREAS OF BAY OF BENGAL AND SOUTH ANDAMAN SEA.

PROBABILITY OF CYCLOGENESIS (FORMATION OF DEPRESSION) DURING NEXT 120 HRS:

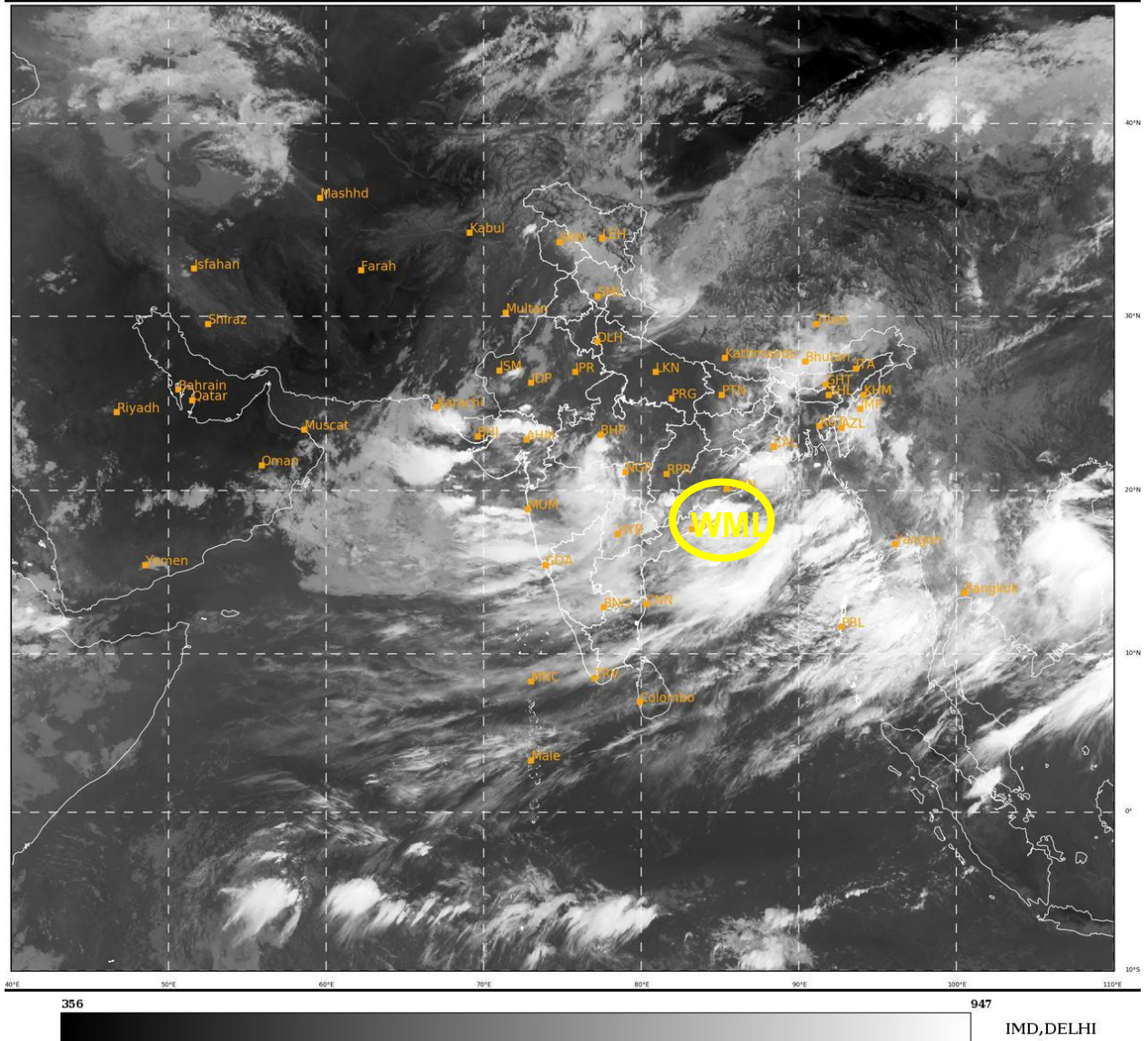
24 HOURS	24-48 HOURS	48-72 HOURS	72-96 HOURS	96-120 HOURS
LOW	NIL	NIL	NIL	NIL

ARABIAN SEA:

SCATTERED LOW AND MEDIUM CLOUDS WITH EMBEDDED INTENSE TO VERY INTENSE CONVECTION LAY OVER NORTHEAST AND EASTCENTRAL ARABIAN SEA. SCATTERED LOW AND MEDIUM CLOUDS WITH EMBEDDED WEAK TO MODERATE CONVECTION OVER REST AREAS OF ARABIAN SEA.

PROBABILITY OF CYCLOGENESIS (FORMATION OF DEPRESSION) DURING NEXT 120 HRS:

24 HOURS	24-48 HOURS	48-72 HOURS	72-96 HOURS	96-120 HOURS
NIL	NIL	NIL	NIL	NIL



WML: WELL MARKED LOW PRESSURE AREA